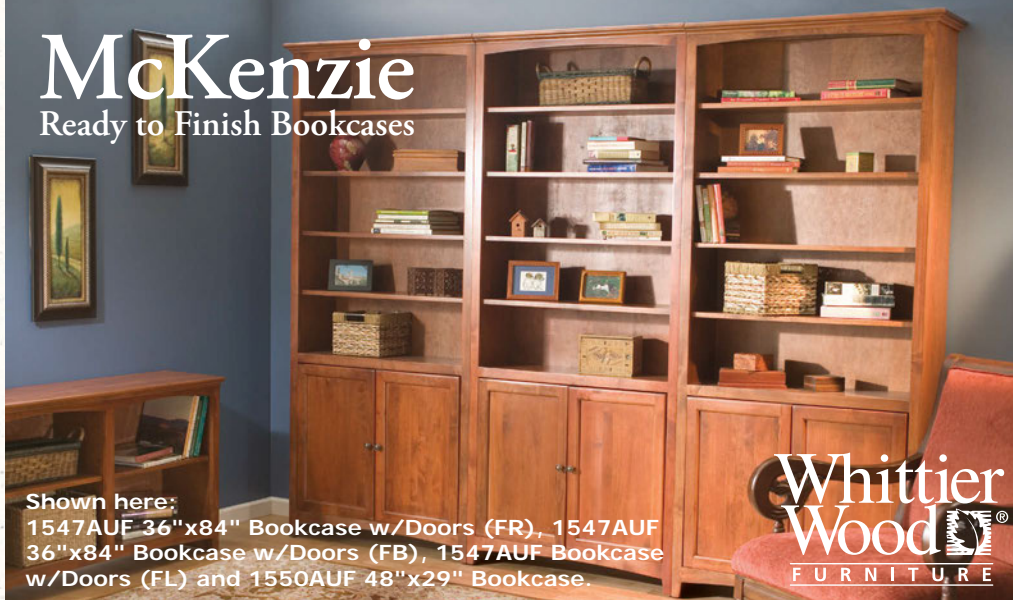


McKenzie

Ready to Finish Bookcases



Shown here:
1547AUF 36"x84" Bookcase w/Doors (FR), 1547AUF 36"x84" Bookcase w/Doors (FB), 1547AUF Bookcase w/Doors (FL) and 1550AUF 48"x29" Bookcase.

Whittier
Wood
FURNITURE



Shown here:
1545AUF 36"x72" Bookcases w/Doors (FR/FL), 1524AUF 24"x72" Bookcases (FL/MR) & (FR/ML), 1509AUF Corner Connector.

McKenzie Bookcase Program

This collection of classically designed bookcases has timeless appeal. Solid, sustainable American Alder and Red Birch hardwood ensure beauty, strength and durability to last a lifetime. The offering is broad with a wide range of heights and widths to create your dream wall.

Standard Features:

- Made from solid, sustainable American Alder and Red Birch hardwoods.
- Made in the U.S.A. of domestic and imported parts.
- Dowel and pocket screw construction for strength and durability.
- Fitted backs for structural strength.
- Adjustable solid wood shelves are strong and sturdy.
- Adjustable glides on all units.
- Units 60"H or taller and Cabinets include a tipping restraint that is pre-attached.
- All 72"H and 84"H bookcase units feature fixed center shelves for stability.
- Doors attached to the 72"H and 84"H Bookcases, Cabinets and Center Wall Unit feature adjustable Euro hinges.
- Hatches include mounting hardware for the Cabinets.
- Hatches have cord cutouts in the back.

24"W Bookcases

Unit depth: 13-3/8"D, Adjustable Shelves: 22-1/4"W x 11"D



1527AUF • 26-1/2"W x 84"H
1525AUF • 26-1/2"W x 72"H
1526AUF • 26-1/2"W x 84"H
1524AUF • 26-1/2"W x 72"H
1523AUF • 26-1/2"W x 60"H
1522AUF • 26-1/2"W x 48"H
1521AUF • 26-1/2"W x 36"H
1520AUF • 26-1/2"W x 29"H

30"W Bookcases

Unit depth: 13-3/8"D, Adjustable Shelves: 28-1/4"W x 11"D



1537AUF • 32-1/2"W x 84"H
1535AUF • 32-1/2"W x 72"H
1536AUF • 32-1/2"W x 84"H
1534AUF • 32-1/2"W x 72"H
1533AUF • 32-1/2"W x 60"H
1532AUF • 32-1/2"W x 48"H
1531AUF • 32-1/2"W x 36"H
1530AUF • 32-1/2"W x 29"H

36"W Bookcases

Unit Depth: 13-3/8"D, Adjustable Shelves: 34-1/4"W x 11"D



1547AUF • 38-1/2"W x 84"H
1545AUF • 38-1/2"W x 72"H
1546AUF • 38-1/2"W x 84"H
1544AUF • 38-1/2"W x 72"H
1543AUF • 38-1/2"W x 60"H
1542AUF • 38-1/2"W x 48"H
1541AUF • 38-1/2"W x 36"H
1540AUF • 38-1/2"W x 29"H

48"W Bookcases

Unit depth: 13-3/8"D, Adjustable Shelves: 22-11/16"W x 11"D



1557AUF • 50-1/2"W x 84"H
1555AUF • 50-1/2"W x 72"H
1556AUF • 50-1/2"W x 84"H
1554AUF • 50-1/2"W x 72"H
1553AUF • 50-1/2"W x 60"H
1552AUF • 50-1/2"W x 48"H
1551AUF • 50-1/2"W x 36"H
1550AUF • 50-1/2"W x 29"H

CABINETS & HUTCHES

Unit depths: Cabinet 16-7/8"D & Hutch 13-3/8"D



1625AUF Cabinet (FR), 1626AUF Hutch (FR),
1625AUF Cabinet (FL) and 1626AUF Hutch (FL).



1613AUF Cabinet and
1614AUF Hutch.

CENTER WALL UNITS

4 Adjustable Shelves: 34-1/4"W x 15-1/4"D



1525AUF 72"x24" Bookcases w/Doors
(FR/FL) and 1611AUF Center Wall
Unit w/Doors.

24"W Cabinet & Hutch

Adjustable Shelves:
Cabinet(1) 22-1/4"W x 14-1/2"D, Hutch(3) 11"D



1613AUF • Cabinet
24-3/4"W x 33-1/4"H



1614AUF • Hutch
26-1/2"W x 51-1/8"H



Side
View

Cabinet & Hutch
26-1/2"W x 84"H

30"W Cabinet & Hutch

Adjustable Shelves:
Cabinet(1) 28-1/4"W x 14-1/2"D, Hutch(3) 11"D



1619AUF • Cabinet
30-3/4"W x 33-1/4"H



1620AUF • Hutch
32-1/2"W x 51-1/8"H



Side
View

Cabinet & Hutch
32-1/2"W x 84"H

36"W Cabinet & Hutch

Adjustable Shelves:
Cabinet(1) 34-1/4"W x 14-1/2"D, Hutch(3) 11"D



1625AUF • Cabinet
36-3/4"W x 33-1/4"H



1626AUF • Hutch
38-1/4"W x 51-1/8"H



Side
View

Cabinet & Hutch
38-1/2"W x 84"H

48"W Cabinet & Hutch

Adjustable Shelves:
Cabinet(2) 22-11/16"W x 14-1/2"D, Hutch(6) 11"D



1631AUF • Cabinet
48-3/4"W x 33-1/4"H



1632AUF • Hutch
50-11/16"W x 51-1/8"H



Side
View

Cabinet & Hutch
50-11/16"W x 84"H



1610AUF • Center Wall Unit
39-1/2"W x 18-1/2"D x 76-1/2"H



1611AUF • Center Wall Unit w/Doors
39-1/2"W x 18-1/2"D x 76-1/2"H

CUSTOM OPTIONS

Flush Cuts

Available on all assembled Bookcases, Cabinets and Hutches. This is ideal for making a run of bookcases with a finished crown molding.

Units can be ordered as follows:

- FB** = Flush cut both sides of crown.
- FL** = Flush cut on the left side only.
- FR** = Flush cut on the right side only.

Direction when facing the front of the bookcase.

1509AUF • Corner Connector

Connects two bookcases of the same height. Not compatible with Cabinets, Hutches or Center Wall Units.

For corner configurations order:

- ML** = Miter cut on the left side only.
- MR** = Miter cut on the right side only.

Flush Cut



Miter Cut

